

AN INTERACTIVE QUALITY ASSURANCE INNOVATION

KIP[®] Inspection Program



KNIGHT
oil tools

The patented (U.S. Patent 8,165,848) KIP® interactive inspection process brings a whole new level of efficiency, accuracy, accountability and consistency to Knight Oil Tools' equipment program.

KIP® Tested, Quality Assured



KIP®

This innovative, touch-screen computer application allows technicians and inspectors to retrieve technical data, review reference materials and record tool inspection results right on the shop floor—as they perform their inspections.

Consistency in Inspections

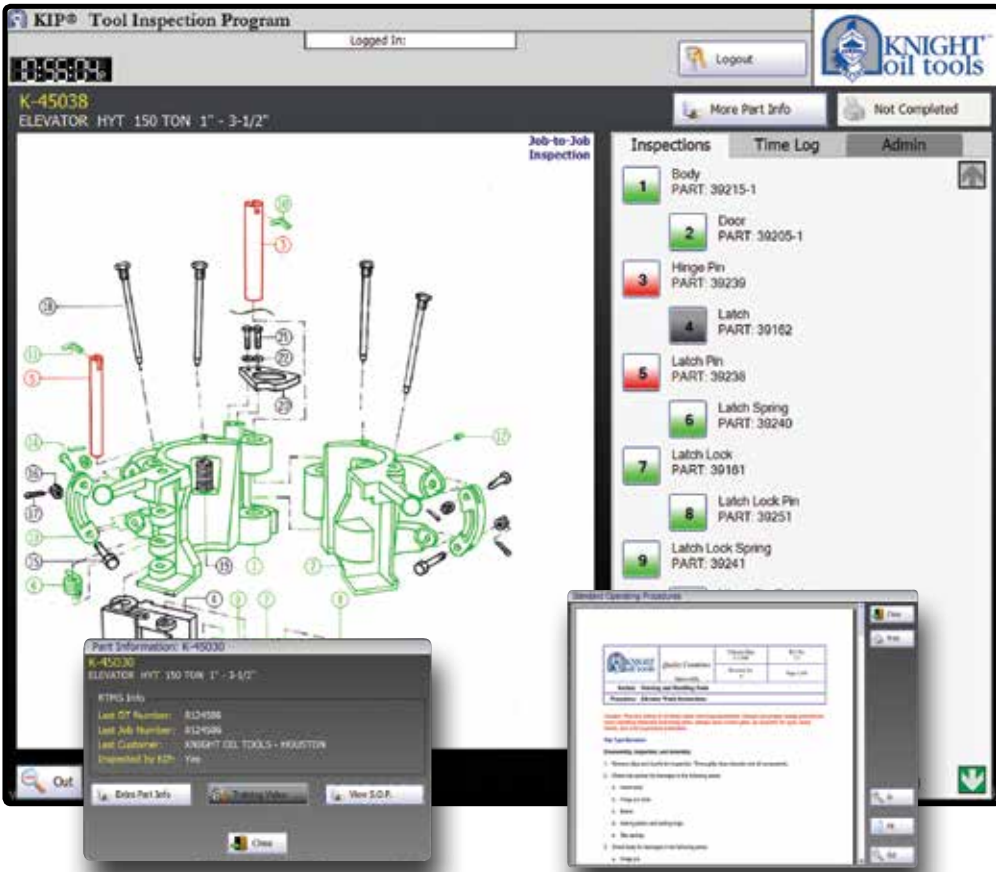
The KIP system delivers consistency to all Knight Oil Tools' inspections regardless of the job, location, technician or inspector. All users must inspect the same components. An interactive schematic diagram ensures that inspectors mark damages on the proper component. All components must be inspected (and results recorded) before an inspection can be finalized. The KIP inspection program is easy to operate and the application supports multiple languages. The interface also standardizes recording and reporting. Together, these advantages provide a consistent work environment for any inspection scenario.

A Reference on the Shop Floor

It is hard to imagine an inspection process more interactive and user-friendly than Knight Oil Tools' KIP inspection program. Work instructions and solutions for any conceivable aspect of the KIP process are right at the technician's and inspector's fingertips. On-screen training videos are available for quick reference. Additional technical reference materials—from both manufacturers and Knight Oil Tools—are available as needed. Knight Oil Tools work instructions are accessible directly on the touch screen for reference and review. And, to make sure the right part goes on the right tool, part number references are available on-screen whenever a replacement part is needed.

KIP Utilizes a Color-Coded Graphic User Interface

- Green:** Components which have passed inspection
- Yellow:** Components which must be replaced on each inspection ("auto-replace parts")
- Red:** Components rejected during inspection and must be repaired or replaced
- Blue:** Component currently being inspected
- Uncolored:** Components which must be inspected before the system will allow the inspection to be closed



Tubular Inspections

Performed by tubular inspectors, the KIP system tracks drill stem inspections and measurement data and alerts inspectors to excessive wear and minimum acceptance criteria. The KIP inspection program also integrates with Knight Oil Tools personnel to ensure that inspections cannot be closed until both tubular and rental inspections are completed. When tubular inspections are completed, the KIP inspection program prints out a detailed inspection report and, if appropriate, releases the tool for continued inspection in the shop.

Accountability and Tracking

With Knight Oil Tools' KIP inspection process, there is never a question about the details of our tool inspections. KIP interactive inspection process reveals which inspector(s) worked on each component of a tool—and when each inspection took place. The KIP program also allows for trending of components with high replacement rates.



The end result of such attention to detail? The KIP Inspection label—signifying that a tool is ready for rental—will only print when an inspection has been completely and successfully finished.

Item goes out on DT #2125982, is received and inspected on 3/21/08

Item is shipped out on DT #2126102, is rented through 3/27/08 and comes back

Damages:

- Shoulder Damage on Box
- Wear on Pin OD
- Wear on Box OD



KNIGHT
oil tools

Knight Oil Tools
2727 SE Evangeline Thruway
Lafayette, LA 70508
337.233.0464
www.knightoiltools.com

©2015 – Knight Oil Tools, All Rights Reserved.

